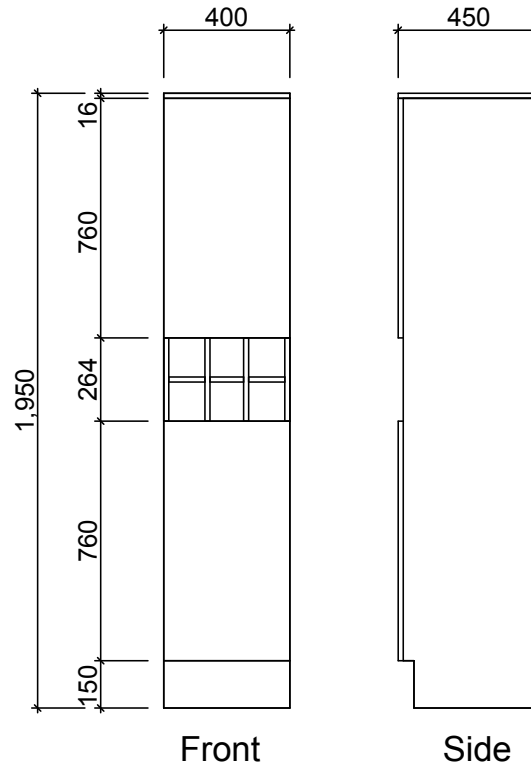
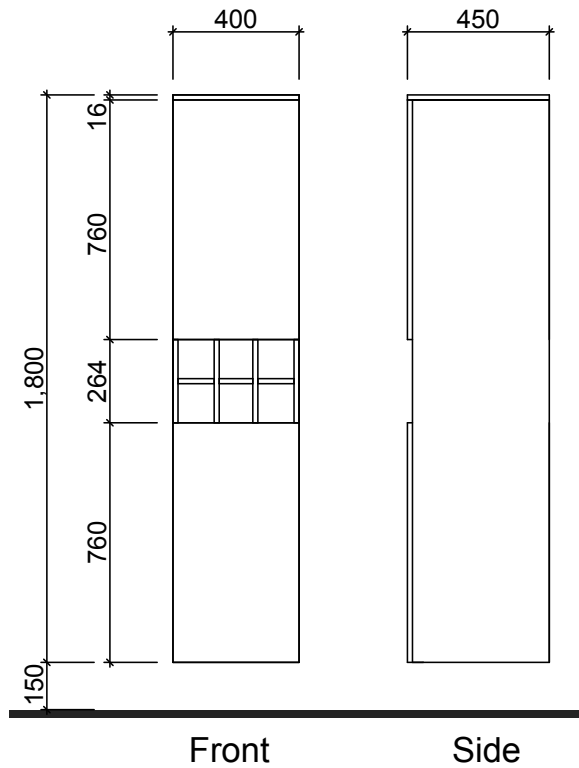


TALL BOYS

St Clair



LH Hinge standard. Specify RH hinge if required.

Waste size: Acrylic = 40mm, Ceramic = 32mm, Sculptured Marble = 32mm
Note: Where left or right hand options are available please specify or else cabinets will be supplied as per these drawings.
NOTE: All vanity top and basin sizes are nominal only. E&OE

